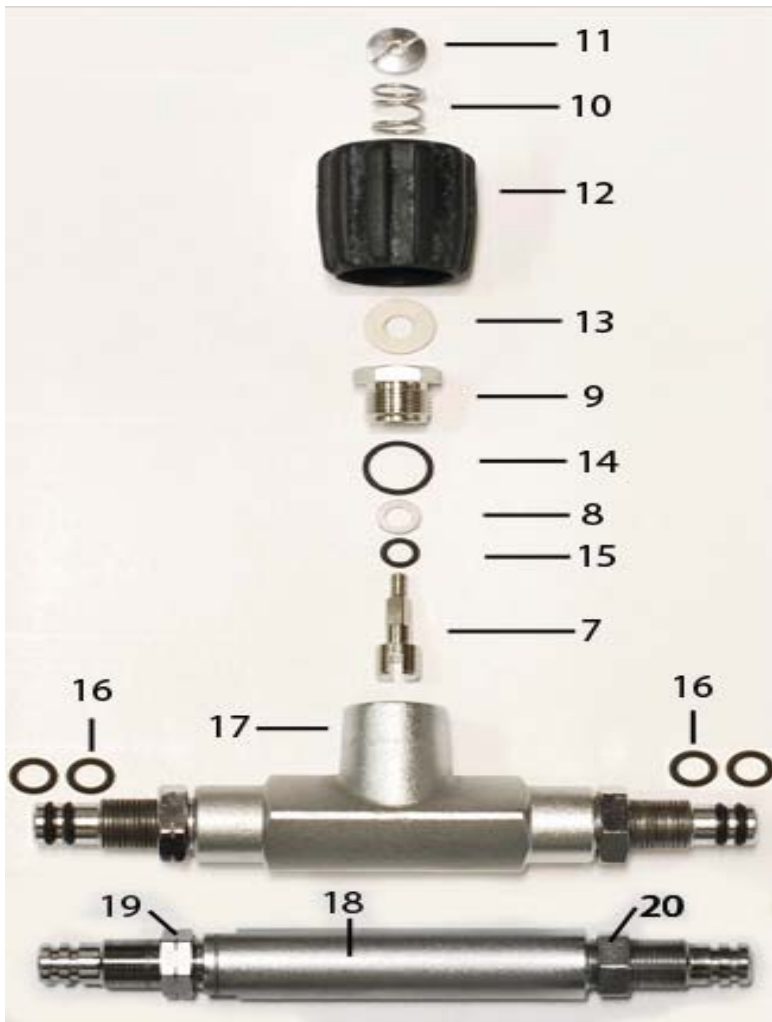


Position	Description	Part nr.	Quantity on valve	Quantity isol. mani
1	Valve	FCV-232R or L	1	2
2	Blind cap	FCV-BC	1	0
3	Yoke insert	FCV-YI	1	2
4	Stacktube	FCV-ST	1	2
5	O-ring	FCV-2499	1	2
6	Threaded seat	FCV-TS	1	3
7	Spindle arm	FCV-SP	1	3
8	Nylon ring	FCV-N2	1	3
9	Modul house	FCV-MH	1	3
10	Spring	FCV-WS	1	3
11	Spindle hat	FCV-SH	1	3
12	Hand wheel	RHW	1	3
13	Anti-friction washer	FCV-N1	1	3
14	O-ring	FCV-171	1	3
15	O-ring	FCV-601	1	3
16	O-ring	FCV-141	2	4
17	Twin Iso Center 2x7	FCV-TIC150	0	1
17	Twin Iso Center 2x10/12	FCV-TIC184	0	1
17	Twin Iso Center 2x10/12	FCV-TIC190	0	1
17	Twin Iso Center 2x15	FCV-TIC214	0	1
18	Twin Center 2x7	FCV-TC150	0	0
18	Twin Center 2x 10/12	FCV-TC184	0	0
18	Twin Center 2x15	FCV-TC214	0	0
19	Lock-nut Left threaded	FCV-LNL	0	1
20	Lock-nut Right threaded	FCV-LNR	0	1



Position	Description	Part nr.	Quantity on valve	Quantity isol. mani
1	Valve	FCV-232R or L	1	2
2	Blind cap	FCV-BC	1	0
3	Yoke insert	FCV-YI	1	2
4	Stacktube	FCV-ST	1	2
5	O-ring	FCV-2499	1	2
6	Threaded seat	FCV-TS	1	3
7	Spindle arm	FCV-SP	1	3
8	Nylon ring	FCV-N2	1	3
9	Modul house	FCV-MH	1	3
10	Spring	FCV-WS	1	3
11	Spindle hat	FCV-SH	1	3
12	Hand wheel	RHW	1	3
13	Anti-friction washer	FCV-N1	1	3
14	O-ring	FCV-171	1	3
15	O-ring	FCV-601	1	3
16	O-ring	FCV-141	2	4
17	Twin Iso Center 2x7	FCV-TIC150	0	1
17	Twin Iso Center 2x10/12	FCV-TIC184	0	1
17	Twin Iso Center 2x10/12	FCV-TIC190	0	1
17	Twin Iso Center 2x15	FCV-TIC214	0	1
18	Twin Center 2x7	FCV-TC150	0	0
18	Twin Center 2x 10/12	FCV-TC184	0	0
18	Twin Center 2x15	FCV-TC214	0	0
19	Lock-nut Left threaded	FCV-LNL	0	1
20	Lock-nut Right threaded	FCV-LNR	0	1